



ORIGINAL GARMENT: 82cm

To Fit Chest:	82cm	87cm	92cm	97cm	102cm
Actual Measurements:	87cm	92cm	97cm	102cm	105cm
Length:	51cm	56cm	56cm	58cm	58cm

## MATERIALS:

5(6,7,7,8) balls **SOUL** 50g colour 7021  
One pair of 3mm knitting needles  
4 stitch holders

## TENSION

32sts x 42 rows = 10cm over stocking stitch using 3mm knitting needles.

## ABBREVIATIONS:

**alt** – alternative; **beg** – beginning;  
**cm(s)** – centimetre(s); **dec** – decrease;  
 **foll** – follow(ing); **gs** – Garter Stitch;  
**inc** – increase; **k** – knit; **K2B** – knit into back of next 2 sts; **LH** – Left hand; **ndl(s)** – needle(s); **no.** – number; **patt(s)** – pattern(s); **p** – purl; **rem** – remaining; **rep** – repeat; **rh** – right hand; **r(s)** – row(s); **r(w)** – right (wrong) side facing; **rw** – ribwise;  
**ss** – stocking stitch; **st(s)** – stitch(es); **tog** – together; **TW2** – knit into front of 2nd st on LH ndl then into 1st st and slip both sts off ndl tog

## STITCHES USED:

### STITCH PATTERN NO. 1 - TWISTED RIB

(Pattern worked over 4 rows)

**Row 1:** \*P2, TW2, P2, K2B\* rep to last 6sts, P2, TW2, P2

**Row 2:** \*K2, P2\* rep to last 2sts, K2

**Row 3:** \*P2, K2B, P2, TW2B\* rep to last 6sts, P2, K2B, P2

**Row 4:** As per 2nd row

### STITCH PATTERN NO. 2 – S.S. CHECK RIB

(pattern worked over 8 rows)

**Rows 1 – 4:** \*K3, P3\* rep to end of row.

**Rows 5 – 8:** \*P3, K3\* rep to end of row.

### STITCH PATTERN NO. 3 – DIAGONAL RIB

**Row 1:** \*K5, P5\* rep to end of row.

**Row 2:** \*P1, K5, P5\* rep to last 4sts, K4.

**Row 3:** K3 \* P5, K5 \* rep to last 7sts, P5, K2.

**Row 4:** P3 \*K5, P5\* rep to last 7sts, K5, P2.

Continue in this way, working each set of 5sts one st to the RH side of work

## GARTER STITCH

 - Knit every row

## SPECIAL NOTE

 – 3 ndl cast off

Do not pull yarn too tight. Slip sts off both shoulders onto thinner ndls. Both points pointing in the same direction. With RS together; using 3mm ndle Ktog 1st sts from

both ndls tog. Twice. Pass 2nd st on RH ndl over 1st st. Rep process until all sts have been cast off.

## BACK:

Using 3mm ndls cast on 142 (150,158,174,182)sts. Please note that sts have to be decreased or increased in the first garter stitch row between pattern changes for most sizes. Beg with patt no. 1 and repeat 12 times altogether. Work 2 rows of G.S. inc or dec as necessary for patt 2.

**1st size:** Inc 2sts (144sts)

**3rd size:** Dec 2sts (156sts)

**5th size:** Inc 4sts (186sts)

Rep patt 2, 6 times altogether and rows 1-6 once more. Work 2 rows GS. Inc or dec as necessary for Patt 3.

**1st size:** Dec 4sts (140sts)

**3rd size:** Inc 4sts (160sts)

**4th size:** Dec 4sts (170sts)

**5th size:** Dec 6sts (180sts)

When work measures 30(35,35,37,37) cm, cast off 15sts at beg of next 2 rows for armholes. Continue without shaping until armhole measures 8(9,11,12,13)cm. Work 2 rows GS. Dec 2 (0, 4, 2, 0)sts across 1st row 108(120,126,138,150)sts. Change to Patt no. 2. When armhole measures 17.5(18.5,19.5,21,22)cm leave sts on a st holder.

## FRONT:

Work as for back until armhole shaping measures 9 (10, 10, 11, 11)cm.

**NECK SHAPING:** Work 38(43,44,49,53) sts. Slip next 32(34,38,40,44)sts onto a st holder for neck. Work 2 rows on remaining 38(43,44,49,53)sts. Neck shaping worked on alt rows.

**1st dec:** De 3sts at neck edge.

**2nd dec:** Dec 2(3,3,3,3)sts at neck edge.

**3rd dec:** Dec 2 sts at neck edge.

**4th dec:** Dec 0(1,1,1,1)st 0(2,2,3,3) times. 31(33,34,38,42)sts remaining. Leave these sts on a holder for shoulder. Join yarn at neck edge for left shoulder. With WSF, work 2 rows. Shape as for right side of neck.

## NECK BAND:

Join right hand shoulders. Slip front shoulder sts onto one ndl. Slip the last

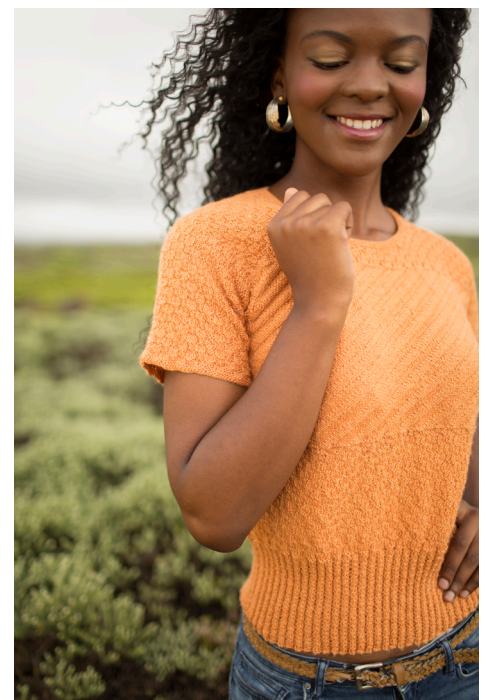
31(33,34,38,42)sts of back onto 2nd ndl. Make sure the RS are facing each other. Cast off these sts using 3 ndl cast off method. With RSF, pick up 32(36,37,38,39) sts down left front, 32(34,38,40,44)sts from front neck, 32(36,37,38,39)sts up right front and 46(54,58,62,66)sts across back neck. Work 4 rows in GS. Cast off on WS.

## SLEEVES:

Cast on 84(92,96,102,108)sts. Work 4 rows in GS. Continue in patt no. 2. Inc in 3rd then every 4th row to 108(116,122,128,134) sts. Work until work measures 15(15,16,16,16)cm. cast off in pattern. Join left shoulder in the same way as the right.

## TO FINISH:

Sew up neck border. Set in sleeves. Join all seams.



**SAMIL**   
NATURAL FIBRES (Pty) Ltd.

- [WWW.AFRICANEXPRESSIONS.CO.ZA](http://WWW.AFRICANEXPRESSIONS.CO.ZA) -

This leaflet is sold on condition that it is used for non-commercial purposes only, and may not be reproduced or copied either by photocopying or in any other way. Unless yarn specified is used, African Expressions cannot accept the responsibility for the finished work. Owing to printing restrictions the colour reproduction is matched as closely to the yarn as possible. All rights are expressly reserved by African Expressions. Pattern Writer: Margaret Botha | Stylist: Roxanne Maddocks | Location: Port Elizabeth | Makeup: Marike de Groot Photography: Eclipse photography | Model: Siphosihle Blanket, Sophisticate Models PE