

Tension

The most important factor in determining the finished size of a knitted item is the tension. Patterns will produce different finished sizes by using a different needle size. It is important to be able to determine how much difference a needle change will make, especially in clothing items.

Each one of us knits differently and there is no standard for knowing exactly how much a needle size will change the tension or finished size of a garment. The tension you hold in the yarn will create loose or tight stitches. For smooth, even stitches, it is important to maintain the same tension. Tension is the responsibility of the knitter and must be consistent throughout the entire item to assure an accurate finished size. It is always best to make a small tension swatch, using the yarn, stitch pattern and needles recommended. Check your tension frequently - if you are not getting the proper tension, you will need to rework that portion adjusting your tension accordingly.

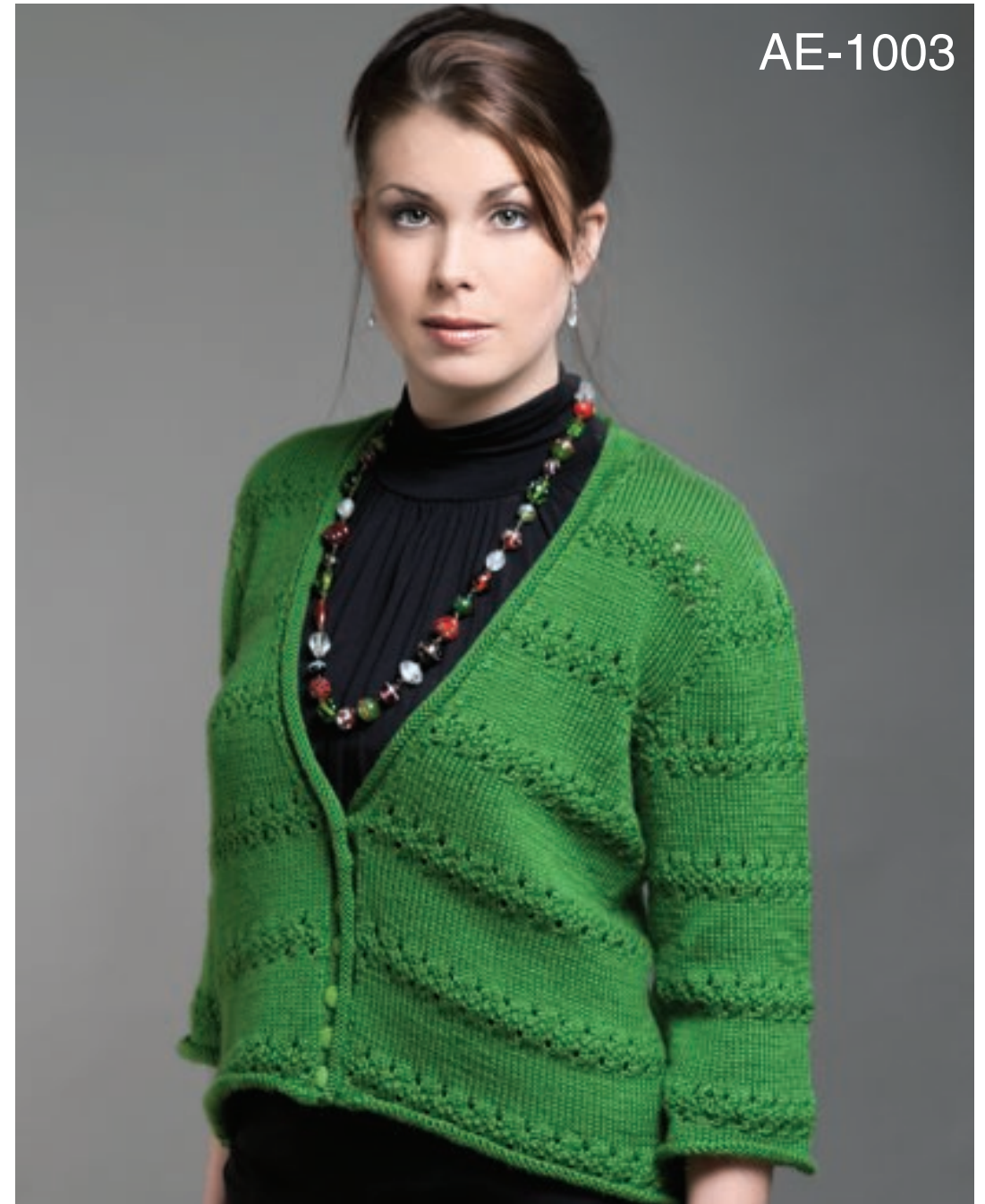
Garment Care

This is important for ensuring that your labour of love remains in pristine condition. Always hand wash garments in a mild soapy solution. Allow to dry flat (on a bath towel on the floor). Never hang your garment on the washing line to dry and always fold and store in a drawer or flat on a shelf.

KNITTING NEEDLE SIZES AND CONVERSIONS

Metric sizes(mm)	US	UK / Canada
2.0	0	14
2.25	1	13
2.75	2	12
3.0	-	11
3.25	3	10
3.5	4	-
3.75	5	9
4.0	6	8
4.5	7	7
5.0	8	6
5.5	9	5
6.0	10	4
6.5	10 1/2	3
7.0	-	2
7.5	-	1
8	11	0
9	13	00
10	15	000
12	17	-
16	19	-
19	35	-
25	50	-

AE-1003



**More downloadable patterns available from
www.africanexpressions.co.za**

V-NECK CARDI

IMPORTANT NOTE: Unless yarn specified is used, African Expressions cannot accept the responsibility for the finished work.

Owing to printing restrictions the colour reproduction is matched as closely to the yarn as possible.

Original garment worked in size 87cm and shown on a size 87cm model.

Pattern and Design by Marelle Hurter

MATERIALS: JOY DK (50g balls) 9(10;11;12;13;14) balls 1119; 7(7;7;7;8;8) buttons.
One pair each 3,25mm and 4mm knitting needles.
One 3,25mm circular needle.

MEASUREMENTS:

To fit Bust: 87(92;97;102;107;112)cm
Actual all round measurement of garment:
Bust: 93(100;105;110;115;120)cm
Length to shoulder: 58(58;60;60;62;65)cm.
THE INSTRUCTIONS ARE GIVEN FOR THE SMALLEST SIZE, WITH THE LARGER SIZES IN BRACKETS; WHERE ONLY ONE FIGURE IS GIVEN, IT APPLIES TO ALL SIZES.

TENSION: SAVE TIME, TAKE TIME, CHECK TENSION.

22sts and 30 rows = 10cm over stocking stitch using 4mm needles.
FOR BEST RESULTS IT IS ESSENTIAL TO OBTAIN THE CORRECT TENSION.
IF THERE ARE TOO FEW STS ON TEST SWATCH, USE THINNER NEEDLES;
IF THERE ARE TOO MANY STS, USE THICKER NEEDLES.

ABBREVIATIONS:

alt = alternate; **beg** = begin(ning); **cont** = continue; **dec** = decrease; **folll(s)** = follow(s) ing; **inc(s)** = increase(s); **k** = knit; **patt(s)** =

pattern(s); **p** = purl; **rem** = remain(ing); **rep** = repeat; **rev** = reverse; **R(W)S** = right(wrong) side; **R(W)SF** = right(wrong) side facing; **R(W)SR** = right(wrong) side row; **RW** = ribwise; **st(s)** = stitch(es); **tog** = together; **yfd** = yarn forward.

STITCHES USED:

EYELET AND MOSS STITCH PATTERN (worked over uneven sts: devisable by 4sts + 1 st):

1st row: K.
2nd row: P.
3rd to 6th row: Rep 1st and 2nd rows.
7th row: K1, *k2tog, yfd, k2, rep from * to end.
8th row: P.
9th to 11th row: P1, *k1, p1, rep from * to end.
12th row: P.
13th row: K3, *k2tog, yfd, k2, rep from * to last 2sts, k2.
14th row: P.
15th to 22nd row: Rep 1st and 2nd rows.
23rd row: K.
24th row: P.
Rep these 24 rows.

BACK:

Using 4mm needles cast on 105(113;117;125;129;137)sts and cont straight in Eyelet and moss st patt (SEE

STS USED) and when work measures 37(36;37;36;38;40)cm from beg ending with a WSR, **SHAPE ARMHOLES:** Cast off 5(5;5;6;6;6)sts at beg of next 2 rows, 2sts at beg of foll 4(4;4;6;6;6) rows, then dec 1 st (= work 2tog) at each end of every foll alt row 12(13;14;14;13;13) times = 81(83;87;89;93;97) sts. Cont straight and when work measures 58(58;60;60;62;65)cm from beg ending with a WSR, **SHAPE SHOULDERS:** Cast off 8(8;8;9;9;10)sts at beg of next 4 rows, 7(8;9;8;9;9)sts at beg of foll 2 rows = 35(35;37;37;39;39)sts. Cast off rem sts for back neck opening.

RIGHT FRONT:

Using 4mm needles cast on 53(57;57;65;65;69)sts and cont straight in Eyelet and moss st patt and when work measures 23(23;25;25;26;29)cm from beg ending with a WSR, **SHAPE V-NECK:** Cont in patt, dec 1 st (= work 2tog) at beg (neck edge) of next and at same edge of every foll 4th row 5(5;2;14;9;9) times in all, then every foll 6th row 13(13;15;7;11;11) times. **AT THE SAME TIME** when work measures 37(36;37;36;38;40)cm from beg ending with a RSR, **SHAPE ARMHOLE** as for one side of back. When all shapings are complete = 23(24;25;26;27;29)sts. Cont straight and when work measures same as back to beg of shoulder shaping ending with a RSR, **SHAPE SHOULDER** as for one side of back.

LEFT FRONT:

Work as for right front, rev shapings.

SLEEVES (Both Alike):

Using 4mm needles cast on 65(65;69;69;77;77)sts and work in Eyelet and moss st patt as folls: Beg with 19(13;13;7;13;19)th row of patt, inc 1 st at each end of every foll 12(10;10;8;8;8)th row 6(9;8;12;2;2) times, then every foll 14(0;12;0;10;10)th row 1(0;1;0;8;8) times = 79(83;87;93;97;97)sts. Cont straight and when work measures 31(32;33;34;34;34)cm from

beg ending with a WSR, **SHAPE TOP OF SLEEVE:** Cast off 5(5;5;5;6;6)sts at beg of next 2 rows, 2sts at beg of foll 4(4;4;6;6;6) rows, then dec 1 st (= work 2tog) at each end of every foll alt row 12(13;14;14;13;13) times, then 1 st at each end of every foll row 10(11;12;12;14;14) times = 17(17;17;19;19;19)sts. Cast off rem sts.

TO MAKE UP:

Sew shoulder seams. **NECKBAND:** RSF, using a 3,25mm circular needle, pick up and k50(50;55;55;57;63)sts along straight edge of right front, 77(77;77;77;79;79) sts evenly up slope of right front neck opening, 36(36;38;38;40;40)sts across back neck, 77(77;77;77;79;79)sts evenly down slop of left front neck opening and 50(50;55;55;57;63)sts down straight edge of left front = 290(290;302;302;312;324)sts. Work in st st for 1cm ending with a WSR. **Next row, buttonhole row:** K4(4;3;3;4;3) sts, cast off 2sts, *k5(5;6;6;5;6)sts, cast off 2sts, rep from * 5(5;5;5;6;6) times more, k to end (= 7(7;7;7;8;8) buttonholes). **Next row:** P one row, casting on 2sts ever each buttonhole. Cont straight in st st until work measures 3cm from beg ending with a WSR, cast off all sts. Set in sleeves. Sew up side and sleeve seams. Sew on buttons.

