



ORIGINAL GARMENT: 91 - 97cm

To Fit Size	105cm	114cm	122cm	130cm
To Fit Bust:	81 - 87cm	91 - 97cm	102 - 107cm	112 - 117cm
Garment Measurements:	90cm	100cm	110cm	120cm
Length from Shoulders:	65cm	65cm	70cm	70cm
Sleeve Seam:	46cm	48cm	48cm	48cm

MATERIALS:

10 (11,12,14) hanks **DESIRE** 100g
One pair 5mm knitting needle
One 5 mm circular needle
Stitch holders
7 buttons

TENSION:

18sts x 23 rows = 10 cm over stocking stitch using 5mm knitting needles.

Abbreviation:

alt - alternate; **beg** - begin(ning); **cont** - continue; **dec** - decrease; **inc** - increase; **k** - knit; **pat** - pattern; **p** - purl; **rem** - remain(ing); **rep** - repeat; **R(W)** - right(wrong) side; **st(s)** - stitch(es); **yfwd** - yarn forward; **L(R)H** - left(right) hand; **ndl(s)** - needle(s); **CN** - cable needle; **k2tog** - knit 2sts together; **S1K1passo** - slip1, knit1, pass slip stitch over; **pm** - put a marker; **M** - Moss

STITCHES USES:

IRISH MOSS: (Multiple of 2sts)

Row 1: k1, p1

Row 2: k1, p1

Row 3: p1, k1

Row 4: p1, k1

Repeat rows for pattern

RING CABLE:

 (over 8sts)

T4F - slip next 2sts onto CN and hold at front of work, p2 from LH needle, then k2 from CN

T4B - slip next 2sts onto CN and hold at back of work, k2 from LH needle, then p2 from CN

T4L - slip 2sts from CN and hold at front of work, k2 from LH needle, then k2 from CN

T4R - slip 2sts from CN and hold at back of work, k2 from LH needle then k2 from CN

DOUBLE CABLE:

 (over 12sts)

C6B - slip next 3sts onto CN and hold at back of work, k3 from LH needle then k3 from CN

C6F - slip next 3sts onto CN and hold at front of work, k3 from LH needle then k3 from CN

3 NEEDLE CAST OFF METHOD:

Do not pull yarn too tight. Slip sts off both shoulders onto thinner ndls. Both points pointing in the same direction. With RS together; using 3mm ndle k tog 1st sts from

both ndls tog. Twice. Pass 2nd st on RH ndl over 1st st. Rep process until all sts have been cast off.

BACK:

With 5mm needles cast on 92(104;116;124) sts and work 9 rows in Irish Moss.

Row 10: (WS) (increase row) p6(10;13;15), (M1, p5) 6 times, p20(24;30;34), (M1, p5) 6 times, p to end. 104(116;128;136)sts

Row 11: k6(10;13;15), *p2, k8, p2, k12, p2, k8, p2*, k20(24;30;34) rep from * to *, k6(10;13;15)

Row 12: p6(10;13;15), *k2, p8, k2, p12, k2, p8, k2*, p20(24;30;34), rep from * to *, p6(10;13;15)

Rows 13 & 14: repeat rows 11 & 12 once more.

Row 15: k6(10;13;15), *P2, T4F, T4B, p2, C6B, C6F, p2, T4F, T4B, p2*, k20(24;30;34) rep from * to *, k6(10;13;15)

Row 16: p6(10;13;15), *k4, p4, k4, p12, k4, p4, k4*, p20(24;30;34) rep from * to *, p6(10;13;15)

Row 17: k6(10;13;15), *p4, k4, p4, k12, p4, k4, p4*, k20(24;30;34).rep from * to *, k6(10;13;15)

Rows 18 to 23: Rep rows 16 & 17 3 more times.

Row 24: As done for row 16

Row 25: k6(10;13;15), *p2, T4R, T4L, p2, C6B, C6F, p2, T4R, T4L, p2*, k20(24;30;34) rep from * to * k6(10;13;15)

Row 26: p6(10;13;15), *k2, p8, k2, p12, k2, p8, k2*, p20(24;30;34) rep from * to * p6(10;13;15)

Row 27: k6(10;13;15), *p2, k8, p2, k12, p2, k8, p2*, k20(24;30;34) rep from * to * k6(10;13;15)

Rows 28 to 31: Rep rows 26 & 27 3 more times

Rows 32: Work as for row 26.

Rows 15 to 32 rows set the cable pattern. Continue in pattern until back measures 65(65,70;70)cm from cast on edge ending with WS row. Mark centre 24(28,32,36)sts for back of neck and cast off all sts.

LEFT FRONT:

**With 5mm needle, cast on 56(62,68,72) sts and work 9 rows in Irish moss

Row 10: (inc row) Moss 11sts, p6(8,10,15), (M1, p5) 6 times, p to end. 62(68;74;78)sts

Row 11: k6(10;13;15), p2, k8, p2, k12, p2, k8, p2, k9(11;14;16) moss 11sts.

Row 12: moss 11sts, p9(11,14,16), k2, p8,

k2, p12, k2, p8, k2, p6(10;13;15)

Rows 13 & 14: Rep rows 11 & 12

Row 15: k6(10;13;15), p2, T4F, T4B, p2, C6B, C6F, p2, T4F, T4B, p2, k9(11;14;16), moss to end

Row 16: Moss 11sts, p9(11;14;16), k4, p4, k4, p12, k4, p4, k4, p6(10;13;15)

Keeping 11sts in Irish moss at front edge work cable pattern over 36sts as given for back from * to*. When front measures the same as the back to shoulder line ending with a WS row. Cast off 40(44;46,48)sts and leave rem 22(24;28;30)sts on a stitch holder.

RIGHT FRONT:

With 5mm needles cast on 56(62;68;72)sts and work 9 rows in Irish moss.

Row 10: p6(10;13;15), (M1, p5) 6 times, p to last 11sts, moss to end

Row 11: (First buttonhole) moss 4sts, cast off 2sts, moss 4sts (first buttonhole) k9(11,14;16), p2, k8, p2, k12, p2, k8, p2, k6(10;13;15).

Row 12: p6(10;13;15), k2, p8, k2, p12, k2, p8, k2, p9(11;14;16), moss to end casting 2sts on top of cast off sts from previous row.

Mark position of rem 6 buttonholes evenly spaced on left front.

Complete to match left side



SLEEVES:

With 5mm needle cast on 44(48;52;56)sts and work 9 rows in Irish moss.

Row 10: (inc row) p19(21;23;25), (M1, p1) 6 times, k to end. 50(54;58;62)sts

Row 11: k17(19;21;23), p2, k12, p2, k to end.

Rows 12 & 14: p17(19;21;23), k2, p12, k2, p to end.

Row 13: k17(19;21;23), p2, C6B, C6F, p2, k to end.

Rows 15 to 22: rep rows 1 & 2
Rows 13 to 22 set Cable Patt.

AT THE SAME TIME shape side of sleeve by increasing 1st at each end of 10th and every 8th row to 68(78,82,86) sts. Cont without shaping until sleeve measures 48(48;50;50)cm from cast on edge ending with a WS row. Cast off loosely.

HOOD:

Join shoulder seams. With RS facing and using circular needle, work across 22(24;28;30)sts from right front, pick-up and k24(28;32;36)sts from back of neck, work across 22(24;28;30)sts from left front stitch holder 68(76;88,96)sts. Working in Irish moss across first and last 11 sts, and in

stocking stitch across rem sts work even for 6 rows.

Next row: work 34(38,44,48)sts, pm, work to end

Next row: (increase row) work to marker, inc 1st, k1, inc 1st, work to end.

Rep inc row every 8th row 6(5,5,4) times. 80(86,98,104) sts

Work until hood measures 23cm ending with a WS row.

SHAPE TOP:

Work across to within 3sts from marker, s1k1 passo, k2, k2tog, work to end.

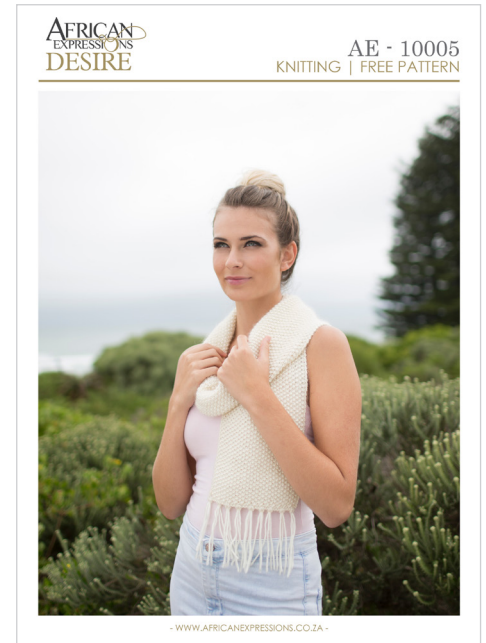
Work 1 row. Rep last 2 rows 8 times end with WS row. Divide sts evenly on 2 needles and join top of hood using 3 needles cast off.

TO MAKE UP:

Set in sleeves, join side and sleeve seams. Sew on buttons.

OTHER AVAILABLE DESIRE PATTERNS:

FREE to download from our website.



- WWW.AFRICANEXPRESSIONS.CO.ZA -



- WWW.AFRICANEXPRESSIONS.CO.ZA -



PATTERNS

FREE TO DOWNLOAD

AFRICAN EXPRESSIONS
COMFORT


AE - 4009
KNITTING | FREE PATTERN



- WWW.AFRICANEXPRESSIONS.CO.ZA -

AFRICAN EXPRESSIONS
FREEDOM


AE - 5018
KNITTING | FREE PATTERN



- WWW.AFRICANEXPRESSIONS.CO.ZA -

AFRICAN EXPRESSIONS
JOY

AE - 1018
KNITTING | FREE PATTERN



- WWW.AFRICANEXPRESSIONS.CO.ZA -

AFRICAN EXPRESSIONS
SOUL

AE - 7011
KNITTING | FREE PATTERN



- WWW.AFRICANEXPRESSIONS.CO.ZA -

AFRICAN EXPRESSIONS
JOY


AE - 1017
KNITTING | FREE PATTERN



- WWW.AFRICANEXPRESSIONS.CO.ZA -

AFRICAN EXPRESSIONS
FREEDOM

AE - 5017
CROCHET | FREE PATTERN



- WWW.AFRICANEXPRESSIONS.CO.ZA -

- WWW.AFRICANEXPRESSIONS.CO.ZA -

This leaflet is sold on condition that it is used for non-commercial purposes only, and may not be reproduced or copied either by photocopying or in any other way. Unless yarn specified is used, African Expressions cannot accept the responsibility for the finished work. Owing to printing restrictions the colour reproduction is matched as closely to the yarn as possible. All rights are expressly reserved by African Expressions. Pattern Writer: Natalia Valentin | Stylist: Roxanne Maddocks | Location: Port Elizabeth | Makeup: Marike de Groot Photography: Eclipse Photography | Model: Siphosihle Blanket, Sophisticate Models PE